

nemi DAQ nano

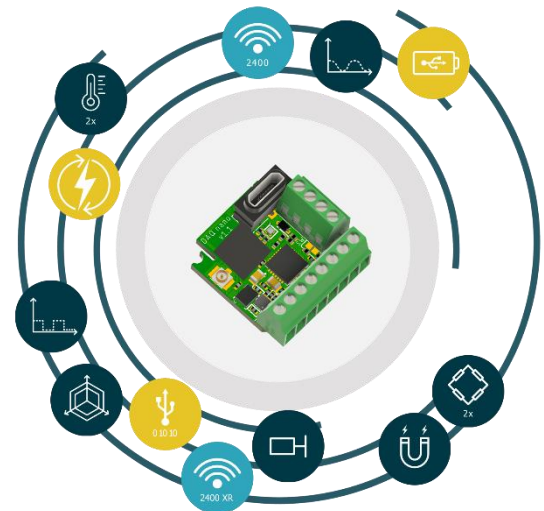
Tiny wireless Multi Sensor with Energy Harvesting Module for Measuring and Monitoring Strains, Forces, Displacements and much more

Description

nemi DAQ nano is i4M's first integrated sensing product in terms of wireless Data AcQuisition. It is a highly compact DAQ multi-sensor module with a wide range of connection options to measure and monitor e. g. strains, forces, displacements or temperatures. In addition to that, various other digital and analog sensors can be connected. With its integrated IMU, it also measures accelerations, rotation rates, rotation angles and magnetic fields. Due to the highly efficient nemi Link 2400 radio technology, very long battery runtimes can be achieved. With solar energy harvesting battery runtimes can be extended. Under good conditions, nemi DAQ nano can even be operated self-sufficiently in terms of energy thanks to energy harvesting.

Key Features

- **Compact & lightweight design**
21 x 21 x 11 mm, < 6 grams
(without connectors: 5.6 mm, < 3 grams)
- **Multi-sensor module** with variety of connection options for data collection to choose from
- **Completely wireless and maximized battery life** due to radio technology nemi Link 2400 and solar panel
- **Energy harvesting:** solar panel offers **unlimited run times**
- Transmission of **live raw data** or **smart data** pre-evaluated by edge computing



Connection of up to 2 **wheatstone / strain gauge full bridges**



Connection of up to 2 **potentiometer sensors**



Connection of up to 2 **temperature sensors** (Pt100 / Pt1000, thermocouples or thermistors)



IMU sensor module for measuring accelerations and rotation rates in and around 3 axes each; ACC up to 16 g; GYR up to 4000 °/s



Connection of up to 2 **analog sensors** with 0 - 10 V output



Triaxial **magnetometer**; measuring range up to 16 Gauss



Connection of up to 2 **sensors with digital output** with 5 - 24 V signal level



nemi Link 2400 - i4M's robust **high-speed radio technology** in the 2.4 GHz frequency band; range up to 20 m



nemi Link 2400 XR - i4M's robust **high-speed radio technology** in the 2.4 GHz frequency band; range up to 300 m



Power supply / battery charging and additional data transfer via **Micro USB**



Optional Connector for **battery** (with charger)



Solar **Energy Harvesting** with MPPT

Quick-Start

- Connect a secondary cell. (A rechargeable battery must have its own protection circuit!)
- Connect USB port or solar panel to start nemi DAQ nano. The LED should now blink continuously.
- Disconnect USB port and/or solar panel if desired. nemi DAQ nano remains switched on as long as the battery is connected and has a sufficient charge.
- Follow step 1 - 4 of Wireless Sensor Plot (V7.0 or higher).

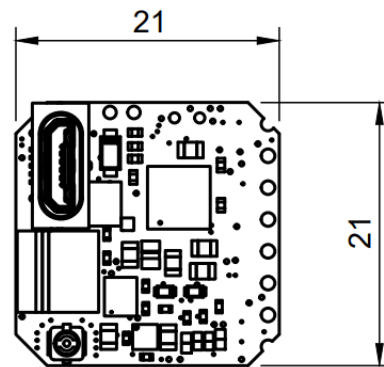
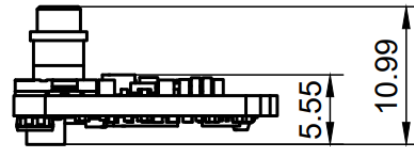
Specifications

General information		
Dimensions (without connectors)	21 x 21 x 11 (21 x 21 x 5.6)	mm
Weight (without connectors)	<6 (< 3)	grams
Power supply	Connectors for battery (with charger)	-
Charging speed	up to 100	mA
External power supply	5 (Micro USB) Solar panel (details see below)	V
Temperature range permitted during operation	-25 to 85	°C
Onboard MCU, usable for edge computing	64 MHz ARM Cortex M4F, 1 MB Flash, 256 KB RAM; various hardware crypto features	-
Housing protection class	Without housing	-
External digital sensors		
Examples for digital sensors	Switching displacement, distance, level or angle of rotation sensors, TTL / NPN sensors	
Number of digital channels	2	-
Sampling rate	2,000	Hz
Sensor switching voltage (logic high)		V
High-Level	5 - 24	
Low-Level	< 2	

External analog sensors		
Connectable analog sensors	<ul style="list-style-type: none"> Reference voltage sensors (e.g. wheatstone / strain gauge full bridges, potentiometer sensors or thermocouple (e. g. Type K) and thermistors) Reference current sensors (e.g. Pt100 / Pt1000 resistance thermometers) Analog sensors with 0 - 10 V voltage output 	-
Number of analog channels	2	-
Maximum Sampling rates (with active channels)	9,600 (1 channel), 1,944 (2 channels)	Hz
Stability of sampling rate (over the entire temperature range)	± 50	ppm
Selectable signal gains	128 / 64 / 32 / 16 / 8 / 4 / 2 / 1	-
Reference currents / supply currents	1,000 / 750 / 500 / 250 / 100 / 50	µA
Reference voltage / supply voltage	2.5	V
Signal resolution	24	bit
Analog measurement error	<< 1	%
Additionally integrated 9-DoF IMU 3-axis MEMS accelerometer (ACC) / gyrometer (GYR) / magnetometer (MAG) each		
Sampling rates	3,332 / 1,666 / 833 / 416 / 208 / 104 / 52	Hz
Selectable measuring ranges ACC	± 16 / 8 / 4 / 2	g
Selectable measuring ranges GYR	± 4,000 / 2,000 / 1,000 / 500 / 250 / 125	°/s
Selectable measuring ranges MAG	± 16 / 12 / 8 / 4	Gauss
Signal resolution	16	bit
Internal temperature sensor		
Measuring range	-20 to 60	°C
Solar Energy Harvesting		
Input voltage (V_{Solar})	0.05 to 5	V
Maximum input current	110	mA
Input power	0.003 to 550	mW
Maximum powerpoint tracking (MPPT)	75 % x input voltage (max. 4)	V
Battery		
Charging cut-off voltage	4.2	V
Discharge cut-off voltage	3.3	V
Charge ready voltage	3.35	V

Dimensions

(All dimensions in mm)



Connection and configuration options for external sensors

nemi DAQ nano offers various connection options for external sensors with analog and digital outputs. There are 2 analog and 2 digital inputs. The following options are available to configure the analog inputs:

- Up to 2 reference voltage sensors (e.g. wheatstone / strain gauge full bridges, potentiometer sensors or thermocouple (e. g. Type K) and thermistors)
- Up to 2 reference current sensors (e.g. Pt100 / Pt1000 resistance thermometers)
- Up to 2 sensors with analog output 0 -10 V

For the digital inputs on nemi DAQ nano there is the following option:

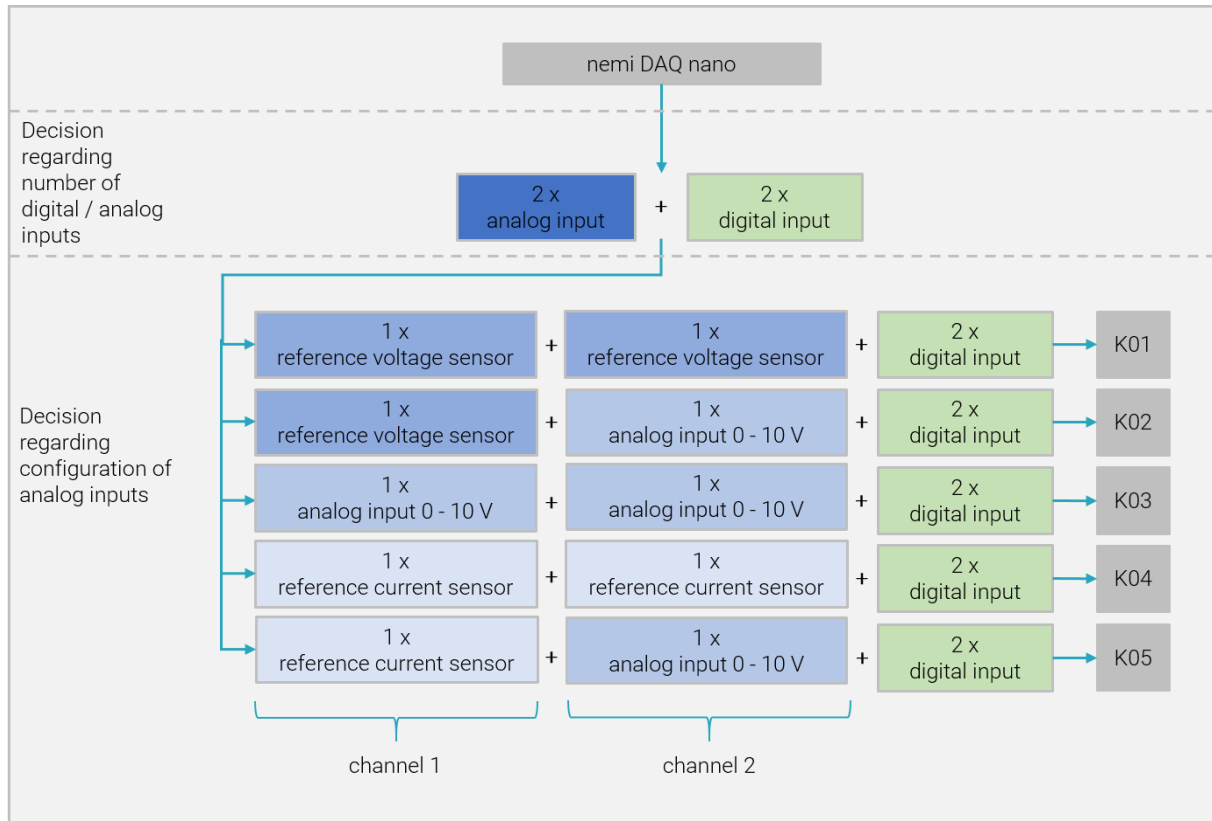
- Up to 2 switching digital sensors with switching voltage level 5 - 24 V (e.g. switching displacement, distance, level or angle of rotation sensors) or TTL / NPN sensors

The options for setting gain and sampling rate by the customer are described in the next section.

Only the configuration of the analog and digital inputs must be defined and specified before delivery of nemi DAQ nano. Subsequent modification is only possible by i4M technologies.

The following graphic shows the different configuration options K1 – K5. A combination of reference voltage sensors and reference current sensors on one nemi DAQ nano is not possible.

Configuration options nemi DAQ nano



Pin assignment

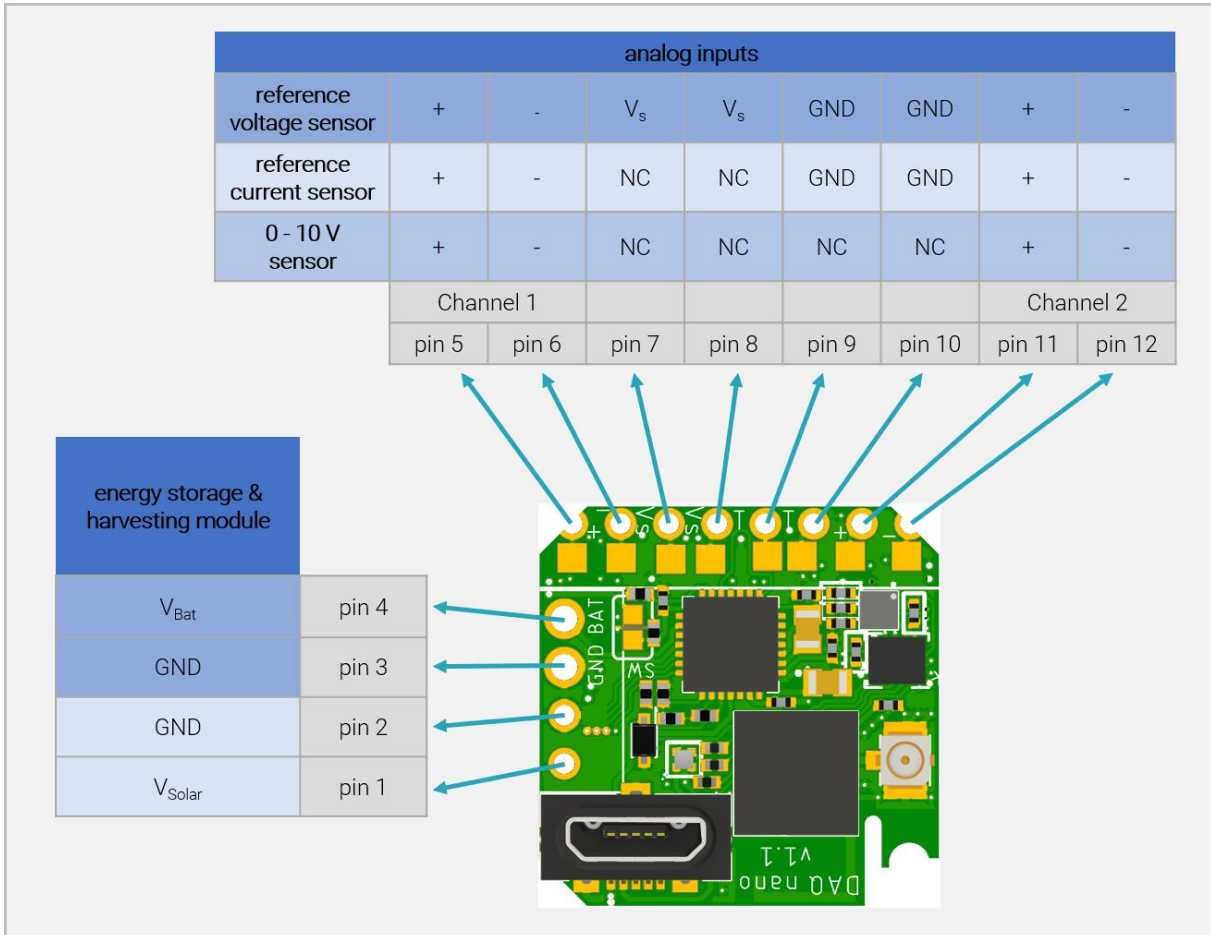
nemi DAQ nano has 15 pins.

- Pin 1 and pin 2 are used for the harvesting module.
- Pin 3 and pin 4 are used for the energy storage.
- Pins 5 - 12 provide two analog inputs. Each input can either be a reference voltage sensor (e.g. wheatstone / strain gauge full bridge, potentiometer sensor or thermocouple (e. g. Type K) and thermistors) or a reference current sensor (e. g. Pt100 / Pt1000 resistance thermometer) or a sensor with an analog input of 0 - 10 V.
- To pins 13 - 15, two digital inputs with signal levels of up to 24 V can be connected.

The possible pin assignments of the analog and digital inputs are shown in the following figures.

Pin assignments of analog inputs, energy storage and harvesting module

Analog inputs, energy storage and harvesting module are to be connected at the top side of the board.



$M_{+/-}$ \triangleq Measured Voltage

GND \triangleq Ground

V_{Bat} \triangleq Battery Voltage

V_s \triangleq Supply Voltage

NC \triangleq Not Connected

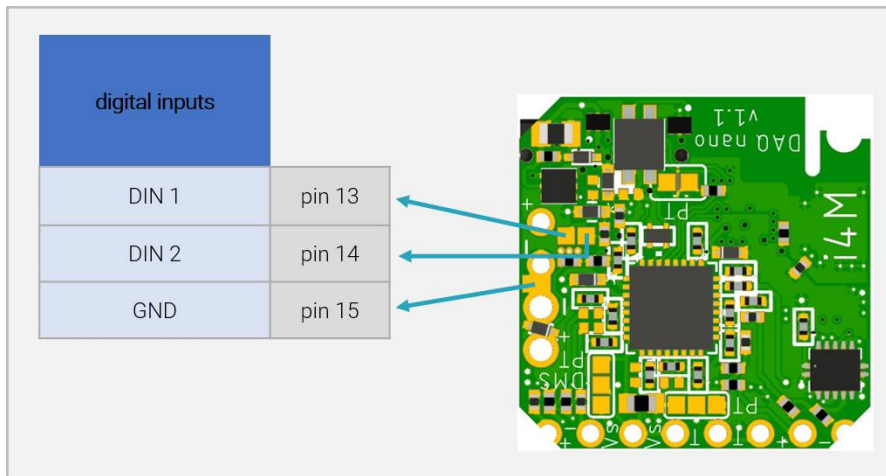
V_{Solar} \triangleq Solar Module Voltage



Reversing the polarity of pins 1-4 can damage nemi DAQ nano!

Pin assignments of digital inputs

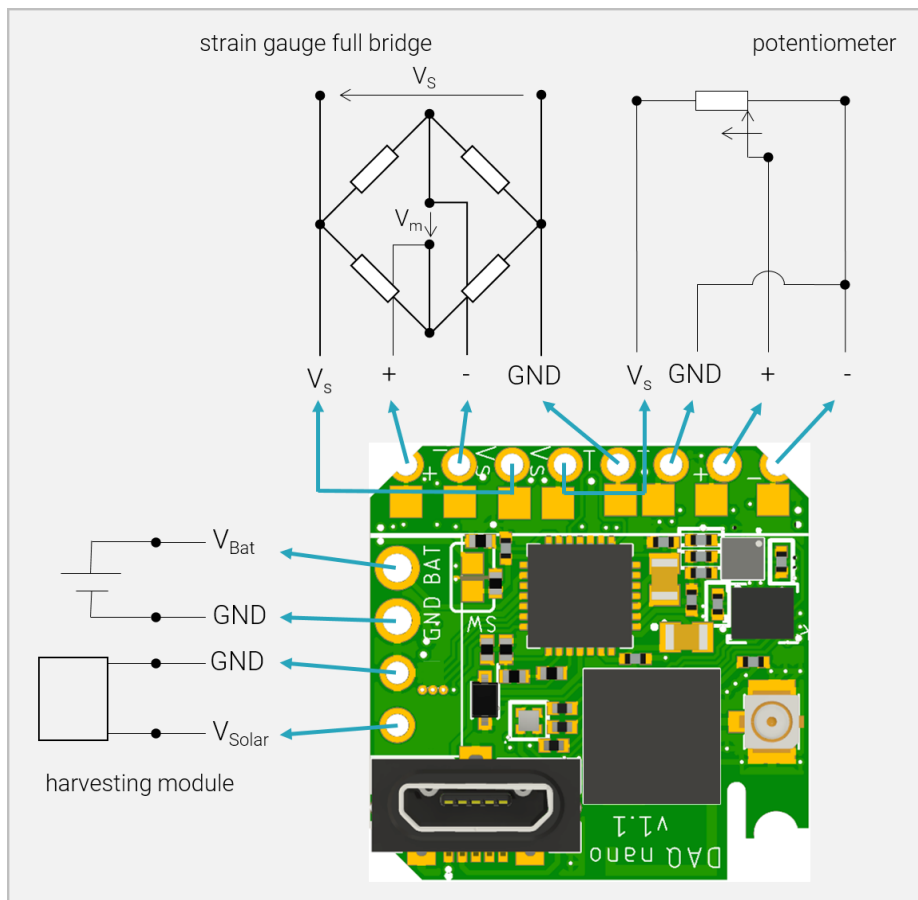
Digital inputs are to be connected at the bottom side of the board.



GND \triangleq Ground

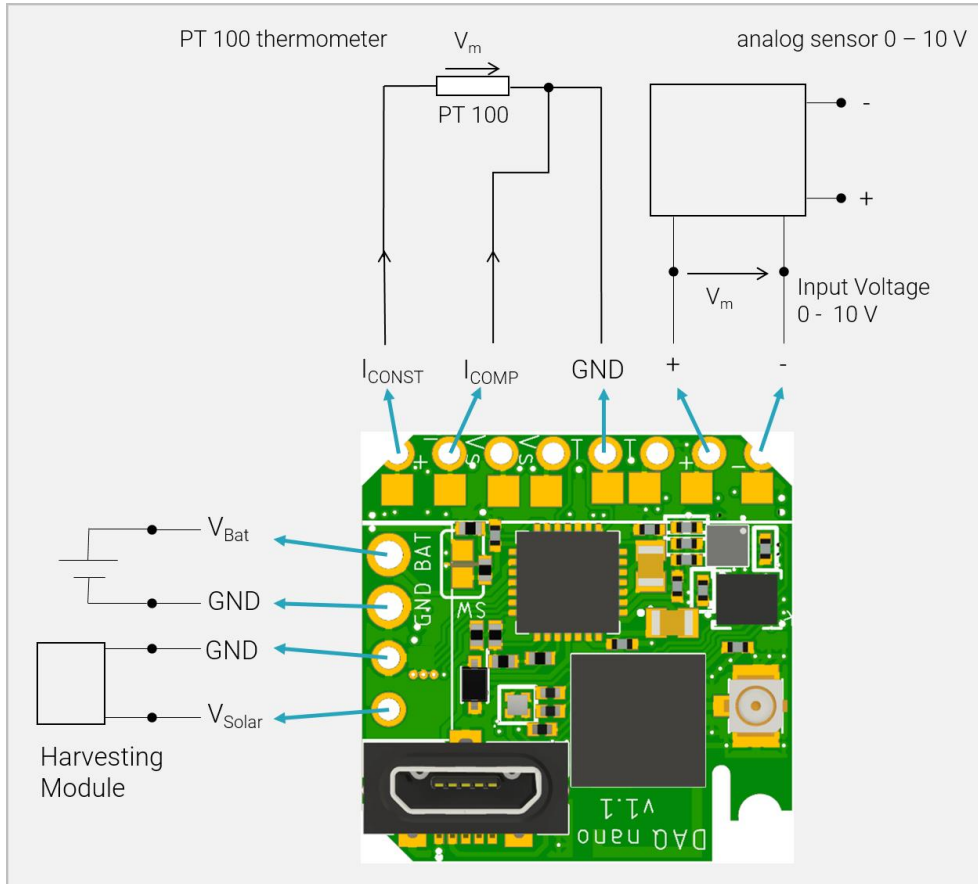
DIN \triangleq Digital Input

Example for pin assignment of configuration option K01



V_m \triangleq Measuring Voltage

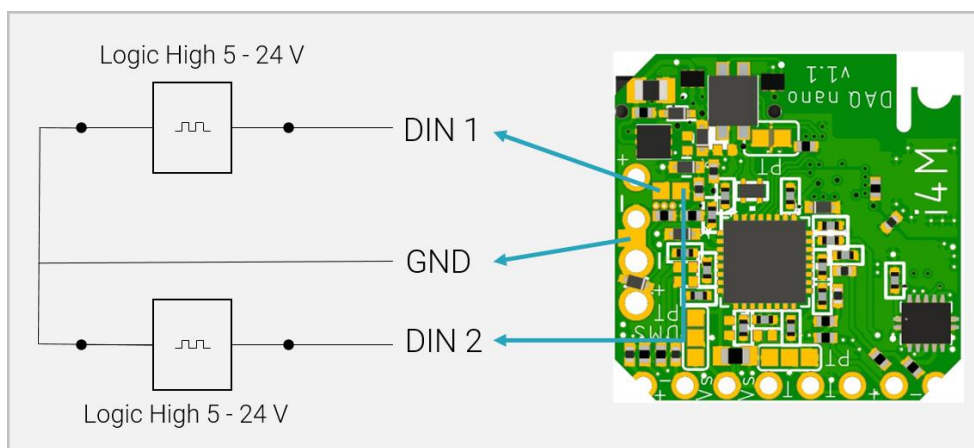
Example for pin assignment of configuration option K05



$I_{CONST} \triangleq$ Constant Current

$I_{COMP} \triangleq$ Compensation Current

Example for pin assignment of digital inputs



Setting of the live radio transmitted sampling rate and signal amplification

The level of the sampling rate of AD converter and IMU, the signal amplification of the AD converter, the measuring range of the IMU and the High-Levels of the digital inputs can be configured via our software.

Sampling rate of the external, analog sensors

The sampling rate of the external analog sensors transmitted live via radio applies to all active channels, but depends on the number of active channels. The more active channels are selected, the lower the sampling rate.

The active channel(s) can be freely selected between the two sensors via software configuration. If the highest possible sampling rate is required, we recommend activating only one channel. Then several channels can be activated again at a lower sampling rate.

The following table shows that the highest sampling rate of 9,600 Hz is achieved when the ODR setting (ODR = Output Data Rate) is set to 1 and one active channel is selected. With two active channels and ODR Setting 1, the maximum sampling rate of the external analog sensors is 1,944 Hz.

ODR Setting	Mode	Number of active channels / live on air sampling rate [Hz]	
		1	2
0	Off	AD off	
1	High Res	9,600	1,944
2	High Res	6,400	1,074
3	High Res	4,800	742
4	High Res	3,200	567
5	High Res	2,400	459
6	High Res	1,600	385
7	High Res	800	332
8	High Res	400	291
9	High Res	200	235
10	High Res	100	196
11	Ultra Low Power	100	100
12	Ultra Low Power	75	75
13	Ultra Low Power	50	50
14	Ultra Low Power	25	25
15	Ultra Low Power	1	1

The signal bandwidth (at -3 dB attenuation) corresponds to the sampling rate multiplied by a factor of 0.23. Accordingly, the -3 dB signal bandwidth at 9,600 Hz sampling rate is 2,208 Hz, and at 100 Hz sampling rate it is 23 Hz.

Signal amplification of the external, analog sensors

With our software, the signal gain can be configured separately for each channel. According to the following table, if the gain setting is 1, the signal amplification is 1 and the measuring range in relation to the supply voltage is thus 1000 mV / V. With a supply voltage of 2.5 V, this corresponds to a measuring range of the analog inputs of 0 - 2.5 V. By selecting a configuration for 10 V inputs, the measuring range of the analog inputs can be extended to 0 - 10 V by activating an attenuator.

Gain Setting	Amplification	Measuring range [\pm mV / V]
0	Channel off	
1	1	1,000
2	4	250
3	8	125
4	16	62.5
5	32	31.25
6	64	15.625
7	128	7.8125

Sampling rate of the IMU

The sampling rate of the IMU can also be configured via the software. The sampling rate of the magnetometer (MAG) is always one eighth of the sampling rate of the accelerometer (ACC) or the sampling rate of the gyrometer (GYR). The following table shows that when the IMU ODR setting is 7, the sampling rate of the accelerometer and the gyrometer is 3,330 Hz and that of the magnetometer is 416 Hz.

IMU ODR Setting	ACC / GYR [Hz]	MAG [Hz]
0	IMU off	
1	52	7
2	104	13
3	208	26
4	416	52
5	833	104
6	1,660	208
7	3,330	416

Radio technology nemi Link 2400

nemi Link 2400 HS (High-speed wireless network)

Our own radio technology nemi Link 2400 is a **wireless, battery-powered sensor network** in the 2.4 GHz frequency band with star topology and one receiver module. The **high efficiency** of our robust radio technology **enables very long battery runtimes** of our products. Our wireless sensors synchronize their internal clocks to the clock of the receiver module with extremely small deviations.

Radio technology nemi Link 2400		
Radio channel	between 2,402 – 2,478 (adjustable in 1 MHz steps)	MHz
Time synchronization deviation	< 100	µs
Radio range	up to 20 (indoor) up to 300 (outside line of sight)	m
Max. sum sampling rate at 24 bits per sample	approx. 36,000	Hz
Sensor nodes per receiver module	3	-

nemi Link 2400 XR (Extended Range wireless network)

To provide a compromise between our high-speed network nemi Link 2400 and our long-range network nemi Link 868 we developed our new network nemi Link 2400 XR. In comparison to nemi Link 2400 it has an extended range, lower data rates and still enables long battery life. It is using the 2.4 GHz frequency band and is available as firmware upgrade. nemi Link 2400 XR can be used with our standard nemione® products.

Radio technology nemi Link 2400 XR		
Radio channel	between 2,402 – 2,478 (adjustable in 1 MHz steps)	MHz
Time synchronization deviation	< 100	µs
Radio range	up to 300 (urban environment) up to 1.800 (theoretical)	m
Max. sum sampling rate at 24 bits per sample	500 - 1500	Hz
Sensor nodes per receiver module	8	-

In addition, **other modes** are available with sampling rates and ranges between the high-speed mode and the extended range mode. Please get in contact for further information:

info@nemi.one

Compatible receiver modules in the nemi Link 2400 wireless network

nemi DAQ nano is compatible with all receiver modules in i4M's nemi Link 2400 network. The following products are available under the nemione® trademark:



nemi EdgeBase



nemi Connect



nemi Log

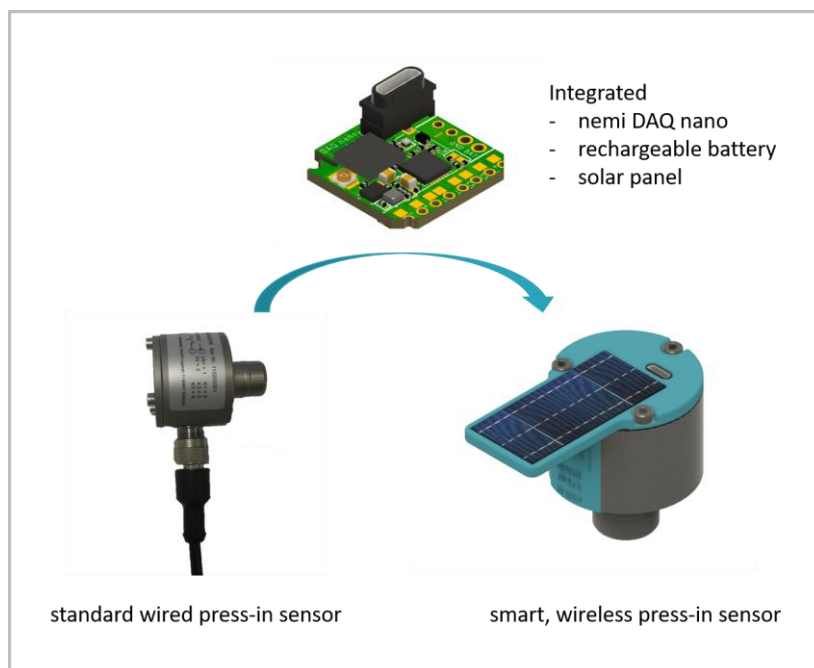
Alternatively, nemi DAQ nano can be connected directly to a computer via USB cable without a wireless connection.

Application

Because of the compact and lightweight design nemi DAQ nano can easily be integrated in smallest installation spaces and turns your components and machines into smart products. Due to its long battery life and our highly efficient nemi Link 2400 radio technology, nemi DAQ nano is ideally suited for use in rotating or moving applications such as torsion / torque measurements in drive trains or load measurements on rotating or moving components.

Example of a smart product:

Replacing the measurement equipment including wiring of a press-in sensor from Primosensor by a nemi DAQ nano, a battery of suitable size and a solar panel.



[Primostrain® EPS Einpressensoren - Primosensor](#)

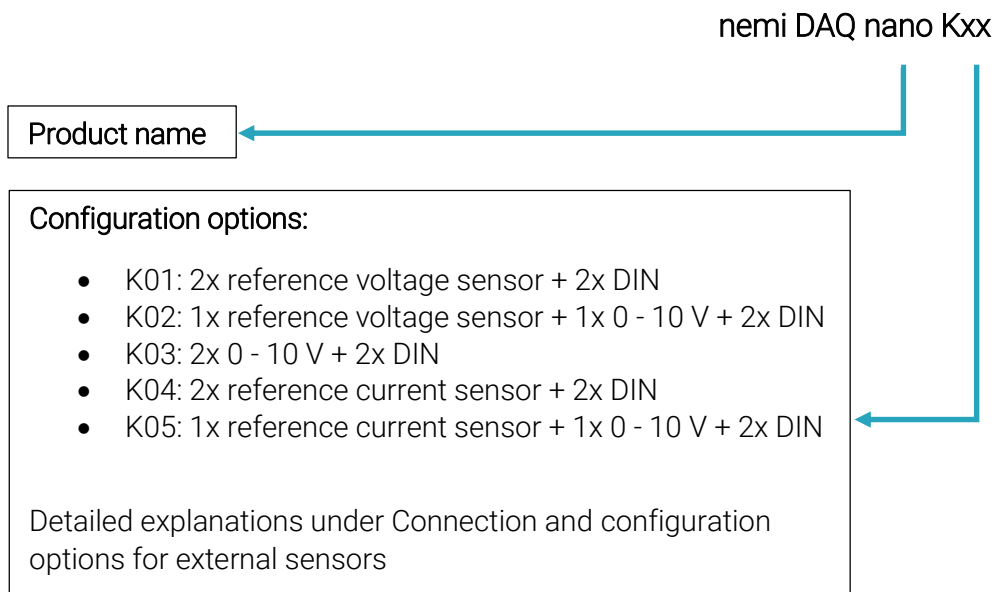
Data Analysis

Upon request, we will be happy to support you with data analysis. The data analyses can be performed directly in the sensor or in the gateway by edge analytics as well as on the server or measuring computer. A great advantage of edge analytics is the **reduction of the transmitted data to the essentials** ("smart data"). This **reduces storage space** and **increases battery runtimes**.

Based on our knowledge from a multitude of previous projects, we have developed **algorithms for data evaluation** to generate **maximum added value** for our customers. We will gladly advise you on this. In addition to our existing algorithms we create **individualized scripts** upon request.

At the same time, the **data remains your capital**: We do not rely on big cloud providers but **keep the data in your IT ecosystem**. Alternatively, you can rely on our nemione® cloud solutions - hosted in the European Union.

Ordering options of nemi DAQ nano



Contact

nemione® is a trademark of

i4M technologies GmbH
Försterstrasse 5
52072 Aachen
+49 (0) 157 34 10 59 30
info@nemi.one

www.nemi.one
www.i4M-tech.de

Copyright © 2022 i4M technologies GmbH
Subject to changes